



## Cost Allocator vs. FlexABM

### Compare the Two Proven Costing Solutions From CRG

*Cost Allocator performs multi-level account allocations using one of four methods: percentage values, fixed amounts, cost drivers/values or account balances.*

*FlexABM has the ability to perform full reciprocal costing, advanced data modeling and dynamic reporting.*

Features and Functionality Checklist	Cost Allocator	FlexABM
Adaptable - systematic cost allocation methodology is ideally suited to any industry segment	✓	✓
Scalable – an unlimited number of modeling elements make it	✓	✓
Multi-periods – allow continuous cost management over time	✓	✓
Unlimited number of scenarios - allow user to perform budget	✓	✓
Import/export wizards - make populating the model effortless	✓	✓
Advanced search capabilities	✓	✓
User friendly list reports	✓	✓
Traceability - users can create and view detailed reports to trace the allocation of costs	✓	✓
Security - multiple users with individual access rights	✓	✓
Centralized database management on SQL Server - allows for easy model maintenance	✓	✓
Advanced modeling capabilities		✓
Full reciprocal costing - an unlimited number of reiterative allocations		✓
Accommodates time-driven/time-based activity-based costing		✓
Automatic data validation		✓
Multi-dimensional data cubes are generated with the click of a button; integrates with any OLAP compliant BI tool		✓
Multi-dimensional data cubes allow drill down reporting and analysis		✓
Multi-lingual capability		✓
Incorporates cost and performance measures - integrates cost/quality/cycle time		✓
Grouping/tagging/multiple roll-up functionality		✓
Multi-level activity assignments and cost objectives		✓

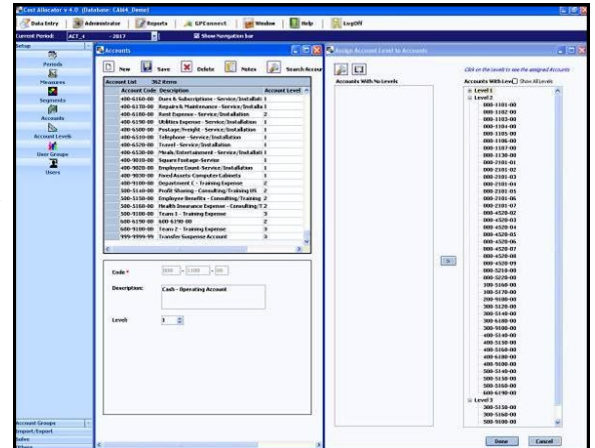


# Cost Allocator vs. FlexABM



## Cost Allocator

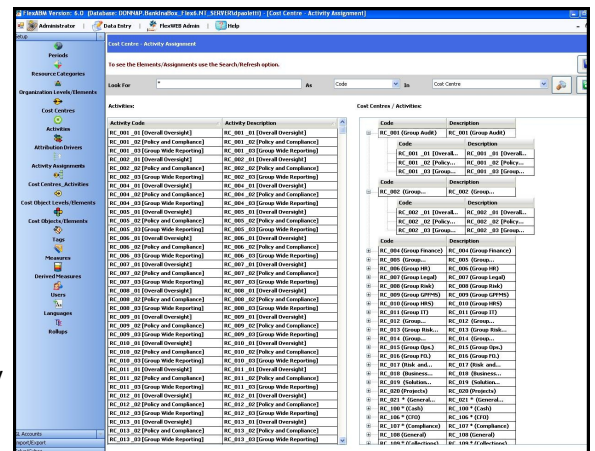
Cost Allocator is a flexible application that performs multi-level cost allocations by percentage, fixed value, cost drivers or balances in other accounts to determine the true cost and profitability. With the Universal Data Connector, data can be imported from any Enterprise Resource Planning (ERP) system. For Microsoft Dynamics GP users, data is extracted from Microsoft Dynamics GP and re-populated back as "budget ID" or an un-posted batch of journal entries.



*Determining profitability has never been easier.*

## FlexABM

FlexABM is a proven, easy-to-use enterprise-wide activity-based costing and management (ABC/M) solution that identifies the true costs of all activities and provides decision makers with the analytical tools, models and methodologies to effectively evaluate the business processes.



FlexABM provides intuitive costing of activities and processes, and is ideally suited to any sized enterprise or industry segment.

## About Corporate Renaissance Group

Corporate Renaissance Group has been providing innovative business solutions for more than 20 years. As a member of the Microsoft Partner Network, we apply Microsoft technologies to help companies increase efficiency and to improve financial and operational performance.

CRG is a truly global company, headquartered in Ottawa, Canada, with offices in Canada, South Africa, India and the United States.



For more information about Cost Allocator, FlexABM or CRG, visit [www.crgroup.com](http://www.crgroup.com).

