



## Cost Allocator

### Perform Multi-Level Step-Down Cost Allocations

#### Solve the Costing Challenge

Accountability for costs has become increasingly important in recent years, and so has the necessity for allocating them. More than ever, senior management is being held responsible for accurately identifying costs and correctly attributing them against departments, functions, products or services.



CRG Cost Allocator™ is a flexible and efficient costing application for those who want a simple yet sophisticated costing tool rather than a full-blown Activity-Based Costing solution. Through the implementation of Cost Allocator, organizations will have the capability of monitoring the full costs against budgets right at the departmental account level. Understanding true profitability has never been so simple!

#### Effortless Allocations

Cost Allocator performs multi-level step-down cost allocations by percentage, fixed value, cost drivers, or balances in other accounts to determine true costs and profitability. With the Universal Data Connector, data can be imported from any Enterprise Resource Planning (ERP) system in a variety of formats. For Microsoft Dynamics GP users, data is extracted from Microsoft Dynamics GP and re-populated back as a “Budget ID” or an un-posted batch of journal entries.

#### Flexible Functionality

- Multi-level, step-down allocation process
- Cross department, cross company cost allocation
- Cost attribution by percentage, fixed value, cost drivers, or balances in other accounts
- Copy data and allocations across periods
- Dynamic account searching and filtering
- User friendly reports
- Import/Export wizards
- User-defined security
- Point and click, drag and drop functionality

## Cost Allocator

- Determines profitability
- Performs budget allocations
- Facilitates strategic decision making, financial planning and business improvements
- Creates reports
- Identifies “true” costs



# Cost Allocator

## CRG Solutions for Microsoft Dynamics GP

### Data Automation

- Changer
- AA Tools
- Re-Formatter
- Reverser
- Merger Series
- Linker Series
- Company Combiner

### Financial Planning and Analysis

- Cost Allocator
- BI Cubes

### Employee Performance Management

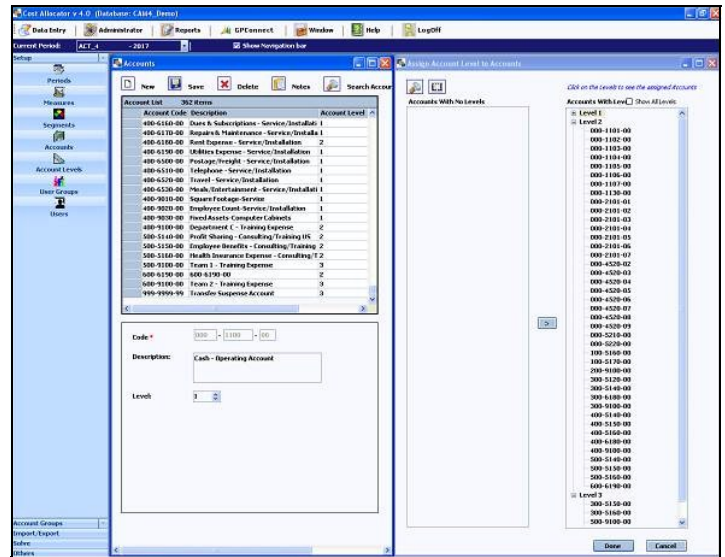
- emPerform

## Cost Allocation For All

Analysis of “true cost” is a complex but important challenge—profitability, corporate competitiveness and even organizational survival can be at stake. Traditional accounting systems are inaccurate in the way they assign costs; organizations must be able to correctly allocate costs in order to make decisions, determine effectiveness and understand true profitability.

Organizations of all sizes, in all sectors can use Cost

Allocator. It is an easy-to-use application that that supports effective cost management and provides meaningful information for better strategic and operational decision making. It is a simple cost management tool that helps Financial Controllers understand full costs through a multi-level, step-down cost allocation process, across accounts, departments or an entire organization.



*Levels are assigned to accounts to allow for effortless multi-level allocations by percentage, fixed value, cost drivers, or balances in other accounts.*

## About Corporate Renaissance Group

Corporate Renaissance Group has been providing innovative business solutions for more than 20 years. As a member of the Microsoft Partner Network, we apply Microsoft technologies to help companies increase efficiency and to improve financial and operational performance.

CRG is a truly global company, headquartered in Ottawa, Canada, with offices in Canada, South Africa, India and the United States.



For more information about Cost Allocator or CRG, please visit us at [www.crgroup.com](http://www.crgroup.com).