

CRG Solutions for Microsoft

The CRG Solutions™ for Microsoft meet the unique challenges faced by Microsoft Dynamics® customers. CRG ensures day-to-day adjustments can be done with ease, and provides tools to effectively reconstruct a chart of accounts or help implement a business intelligence strategy. Thousands of satisfied customers worldwide use CRG applications to maximize the return on their Microsoft Dynamics® GP and Microsoft® Business Solutions Small Business Financials investments.

PRODUCT	MICROSOFT DYNAMICS GP	MICROSOFT BUSINESS SOLUTIONS SMALL BUSINESS FINANCIALS
CHANGER CERTIFIED FOR MICROSOFT DYNAMICS GP	✓	✓
AA TOOLS	✓	
RE-FORMATTER	✓	
MERGER SERIES	✓	
QUICKCUBES	✓	
COST ALLOCATOR	✓	
EMPERFORM	✓	

Corporate Renaissance Group



Corporate Renaissance Group

Founded in 1989, Corporate Renaissance Group (CRG) is a global provider of innovative solutions and services that drive better business management and performance. CRG has been a Microsoft Business Solutions Developer since 1992, and has expertise in corporate finance, shared services and business intelligence. CRG is partnered with industry leaders such as Microsoft and Cognos, with thousands of satisfied customers worldwide.

Corporate Headquarters

Corporate Renaissance Group
 6 Antares Drive, Phase 1, Ste 200
 Ottawa, Ontario K2E 8A9
 Canada
 Phone: 613.232.4295
 Fax: 613.232.7276
 email: sales@crgroup.com

CRG-MS 01/09

www.crgroup.com

CRG Solutions™, CRG emPerform™, CRG Cost Allocator™, CRG Changer™, CRG AA Tools™, CRG Re-Formatter™ and CRG Merger Series™ are trade-marks of Corporate Renaissance Group Inc. Microsoft, the Microsoft Dynamics logo, and Microsoft Dynamics are either registered trademarks or trademarks of Microsoft Corporation in the United States and/or other countries.



Our Products

Data Automation

CRG Changer

Change and Merge User-Defined IDs and Data

CRG Changer™ software merges and changes GL accounts, Vendor IDs, item numbers, Customer IDs, project numbers and contract numbers for all current and historical transactions. It also changes and transfers all transactions to new Employee IDs.



CRG Changer GL allows you to make changes from a specified date forward. CRG Changer software will update data from many Microsoft Dynamics GP modules and various third-party applications - a complete listing of these modules can be found on www.crgroup.com.

AA Tools

Maximize your Analytical Accounting Investment

CRG AA Tools™ is a modular software solution that allow you backfill Analytical Account (AA) transaction dimension codes in a regular batch update routine; change and merge AA transaction dimension codes; and convert general ledger segments to AA dimension codes.

AA Tools Utilities:

- **AA SegmentConverter** - convert GL account segment values to transaction dimension codes.
- **AA Backfiller** - populate analysis information for un-posted, posted as well as historical transactions for select journal entries.
- **AA Changer** - change and merge transaction dimension codes.

CRG Re-Formatter

Re-format the Account Framework

Re-format your chart of accounts and account structure, by altering the format of all data such as maximum account length, size of segments, and number of segments. Historical data is modified as the old account format is mapped to the new format.

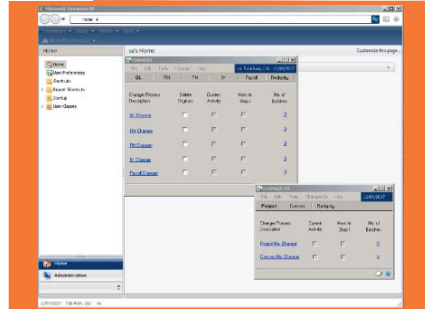
CRG Re-Formatter™ software allows companies to grow while ensuring the integrity of their financial system is maintained. CRG Re-Formatter can update data from various third party applications and additional Microsoft Dynamics GP modules - a complete listing of these modules can be found on www.crgroup.com.

CRG Merger Series

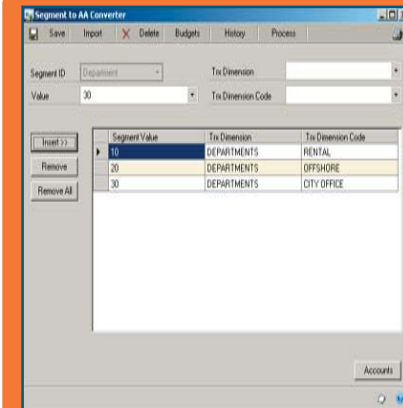
Consolidate Customer Orders and Invoices

Integrated with the Microsoft Dynamics GP Sales Order Processing (SOP) module, CRG Merger Series™ software allows the merging of orders or invoices. You will lower your cost per shipment and reduce administrative expenses by processing fewer orders or invoices.

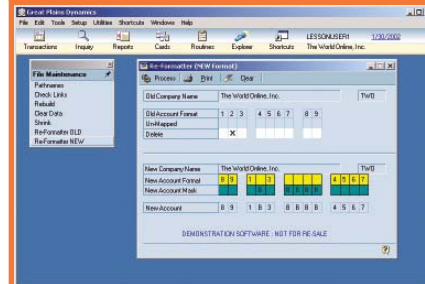
- **OrderMerger** combines multiple orders into one, individually or by range of customers, before shipping and invoicing has transpired.
- **InvoiceMerger** merges multiple invoices for your customers prior to posting. Additionally, partial shipments can be invoiced at one time.



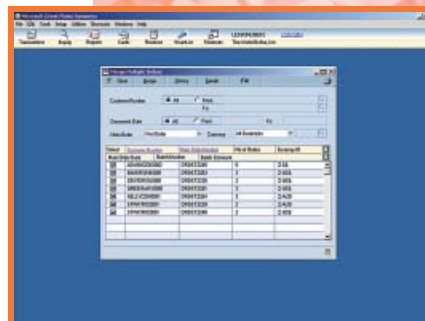
Changer by CRG is Certified for Microsoft Dynamics GP



Convert GL account segments to transaction dimension codes with AA SegmentConverter. Then use CRG Changer to change and tidy-up the GL accounts.



The screen is divided into two: the top displays old account format information, the bottom the new details.



Choose a customer and select which orders to merge.

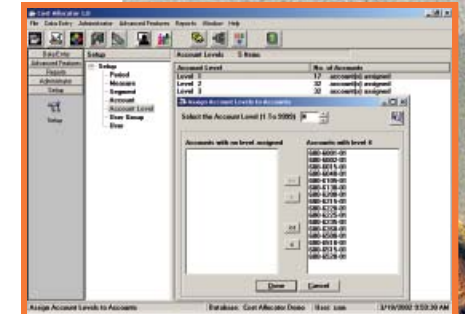
Financial Planning and Analysis

CRG Cost Allocator

Better Understand Full Costs

CRG Cost Allocator™ software is a flexible application for those who want a simple yet sophisticated costing tool. Perform multi-level cost allocation by percentage, value, or cost drivers to determine true costs and profitability. A full audit trail is provided to track the origin of costs.

Using a seamless interface to Microsoft Dynamics GP, the CRG Cost Allocator application effortlessly extracts the financial data, performs detailed cost allocations, then populates the data back into Microsoft Dynamics GP as a 'Budget ID' or an un-posted batch of journal entries. Users can now monitor overheads against budgets right at the departmental account level.



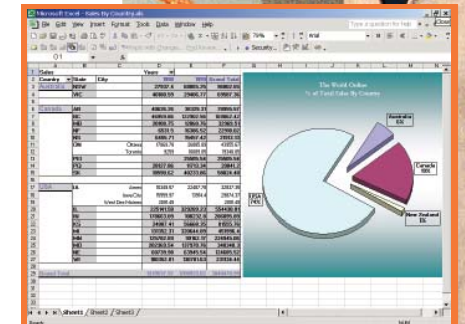
Assign levels to each G/L account based on cash flow. Or create a dummy account to allocate and attribute overheads without creating journal entries.

CRG QuickCubes

Transforming Data into Information

QuickCubes for Microsoft Dynamics GP Business Essentials and Standard provides you with instant access to your key information. Easy-to-use, pre-built sales and financial cubes deliver analysis-ready data. QuickCubes consists of a Data Warehouse and cubes for:

- General Ledger
- Accounts Payable
- Accounts Receivable
- Inventory
- Sales



Sales Cube - Quickly summarize, cross-tabulate and analyze your sales information within a Microsoft Excel environment.

CRG offers complete BI services for all editions of Microsoft Dynamics GP. We leverage the Microsoft BI suite of products and integrate information from all your data sources.

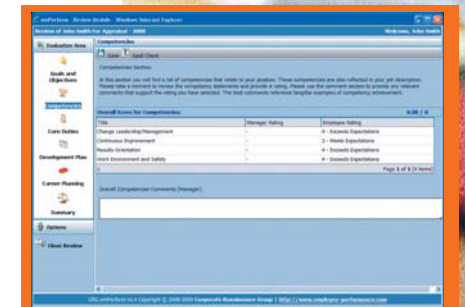
Employee Performance Management

emPerform

Automate Employee Appraisals

CRG emPerform™ software is an easy-to-use, web-based employee appraisal system that integrates reviews, multi-rater feedback, surveys and reporting. This collaborative tool automates the evaluation process to increase efficiency, improve workflow, and develop skills and competencies.

- Integrates with Microsoft Dynamics GP HR and Payroll
- Includes goal/objectives cascading, numeric or text-based rating scales, succession planning, and off-line synchronization
- Generates Microsoft Outlook tasks, keeping everyone on target
- Provides flexible, dynamic forms to customize appraisal templates
- Includes **CRG eSurvey** software that provides unlimited 360° feedback, named-respondent and anonymous web surveys



Determine and evaluate the competencies that are central to an employee's success.