



# Reverser

## *Adjust Journal Entries All at Once*

*Does your organization...  
Have problems with  
incorrectly posted journal  
entries?*

*Re-post original  
transactions to different  
fiscal periods?*

*Need to rectify incorrect  
postings and create  
additional opposite  
entries?*

*Waste time and resources  
by making individual  
journal entry corrections?*

### Versatile Functionality

Reverser™ allows Microsoft Dynamics™ GP users to easily and cost-effectively reverse, rectify, or re-post journal entries.

**Reverse:** Reverse transactions by creating an exact opposite entry.

**Rectify:** Reverse the original transaction and create an additional reverse entry with the same or different transaction posting date.

**Re-Post:** Reverse a transaction and post the original transaction to a different fiscal period or a different transaction posting date.

Reverser does not modify the original Microsoft Dynamics GP data, so a firmly established audit trail is generated.

### Intuitive Interface

Reverser provides an easy-to-understand interface to create a batch that can amend every transaction in the general ledger. Simply specify the reversing batch details, filter the available posted entries and select whether to reverse, rectify, or re-post the selected entries.

When changes are made in batches, all the corrections can be done at the same time; eliminating the tedious task of reversing transactions one at a time.

Adjustments to the general ledger can be made in three easy steps:

- Step 1** Enter the new details that will be assigned to the reversing, rectifying, and/or re-posting entries.
- Step 2** Establish filters to find the journal entries that need to be corrected. The filters include Journal Entry, Batch ID, Transaction Date and User who posted.
- Step 3** Select the journal entries to be reversed, rectified or re-posted.

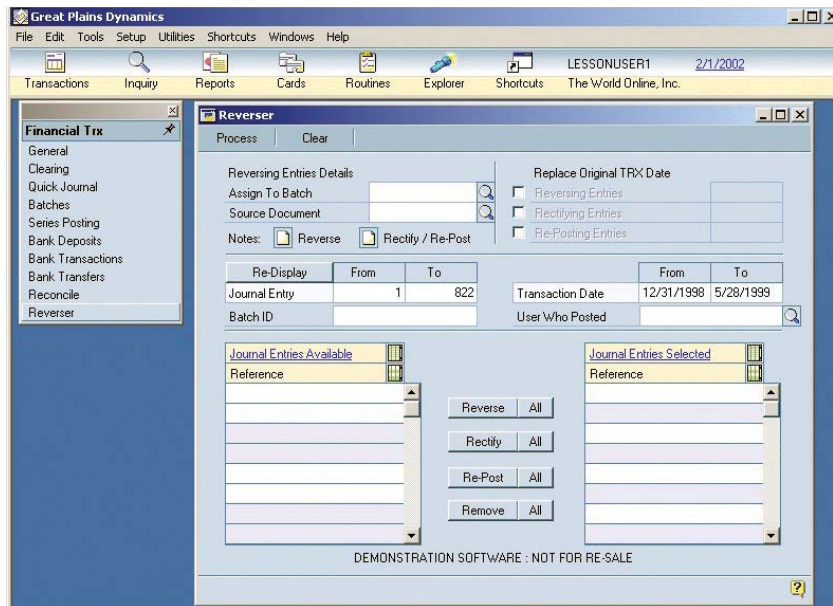
# Reverser

The primary window is partitioned into three sections, which guides users through the required steps.

*Reverser is a dynamic and intelligent business solution that efficiently reverses, rectifies, and/or re-posts journal entries when the need arises.*

*Reverser can save hundreds of data-entry hours, as transactions can effortlessly and simultaneously be corrected without having to manually re-enter the information.*

*Reverser ensures the accuracy of your financial statements.*



*Reverse, rectify, or re-post journal entries all at once.*

## About Corporate Renaissance Group

Established in 1989, Corporate Renaissance Group is a global provider of innovative solutions that drive better business management and performance. With expertise in business management applications, CRG has established itself as a leading provider of solutions that drive operational effectiveness.

CRG is headquartered in Ottawa, Canada, with offices in the United States, South Africa and India.

For more information about CRG and Reverser, including an online demo, please visit [www.crgroupsolutions.com](http://www.crgroupsolutions.com).



## Corporate Renaissance Group

6 Antares Drive, Phase 1, Suite 200, Ottawa, ON K2E 8A9 Canada  
 Tel: 613.232.4295 Fax: 613.232.7276 e-mail: [sales@crgroup.com](mailto:sales@crgroup.com)  
[www.crgroupsolutions.com](http://www.crgroupsolutions.com) [www.crgroup.com](http://www.crgroup.com)